



# SOUTHRIDGE FIRST SCHOOL

Mrs Sue Hall, Headteacher  
Cranleigh Place, Beaumont Park, Whitley Bay, Tyne and Wear, NE25 9UD.  
Tel: 0191 2008709 Fax: 0191 2008710  
e.mail: southridge.first@northtyneside.gov.uk

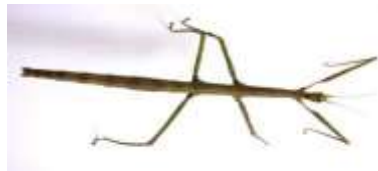
Dear Parents and Carers,

## Newsletter 3: 10<sup>th</sup> February 2017



**RSPB Birdwatch** - Well done to all those children who completed a Birdwatch on 28<sup>th</sup> and 29<sup>th</sup> January. We had some fabulous recording sheets returned with a range of different birds spotted and illustrated. We have collated the information from our school for the RSPB

**Zoo Lab** - Children in Year 1 and 4 enjoyed a workshop with staff from Zoo Lab. They brought in some 'amazing animals' for Year 1 to see and those which you would find in the Rainforest for our Year 4 children - all linked to their topics. Our children listened and looked very carefully and enjoyed the 'hands -on' aspect of handling some of the creatures e.g. giant stick insects. African snails, tortoises, snakes, cockroaches and tarantulas!



**Safer Internet Day** - this week children have been reminded of our e-safety and how to access the internet safely. Please support us by ensuring that your children are playing age appropriate games etc. on their i-pads, computer /games consoles etc.



rules

**Musical Celebration Event** - On Wednesday March 22nd at 6.00pm in the school hall children in our choir (from Year 2, 3 and 4) will perform alongside the violinists. Please look out for information in school bags.

**Nursery Places for September 2017** - Letters have been issued allocating Nursery places for September 2017 either by post or in school bags of siblings. Reply slips must be returned by half-term.

**Governor Visits** - this term our governors have been monitoring teaching and learning. They have been in school talking to our children, observing reading and maths lessons as well as reviewing the work in the children's books. Our Health and Safety governor also helped us prepare for a Local Authority Health and Safety Audit. In addition the Finance Committee met to review the budget and allocate funding to building repairs /maintenance, including installation of the doors in Year 1. The PTA have also been a tremendous support to us this year in upgrading the old interactive whiteboards with Clevertouch screens.



Moving forwards the Finance Committee will allocate some of our budget, as well as fundraising with the PTA next year to improve the outdoor space and we hope to slightly extend the playground. This will enable us to create a ball games area at the very edge of the field to be used all year round, without taking too much space from our fabulous school field. The Curriculum Committee also reviewed our School Development Plan, school data and curriculum policies.

**Our School Development Plan** - a summary of our school development plan is on our school website and last term we asked for your suggestions towards it. One of these was to display children's work in the entrance hall - please look at the fabulous cave paintings from Year 3 as you pass through to the hall. Another suggestion was to focus on being a Healthy School - we will be reviewing this area next term with the children- we'll keep you up to date with their ideas and thoughts.

**Our Forest School Outdoor Area** - have a look at the bottom corner of our school field. Mrs Pringle in Nursery has been working with our very youngest children to think of ways of improving this area to enable our children to complete forest schools work. Our thanks to Whitley Bay Golf Club and Mr Scurfield, the greenkeeper, a Nursery parent. They have sponsored the development of this area. Saplings have been planted and over the next half-term they will create a wonderful learning environment for the future.

**Keeping our community clean and tidy** - Our School Council will be designing some posters to remind people to pick up after their dogs. A number of parents are having to clean school shoes as children arrive in school due to dog fouling. They will also be writing to the Council to ask them to be more vigilant to spot members of the public who allow their dogs to foul around the estate.



### Reminders:

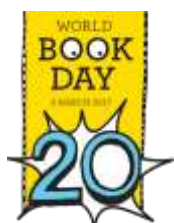
**PTA Social Evening** - This event will be held at The Beacon on 17<sup>th</sup> March. Tickets will be £10 per head to include a buffet. These evenings have been very enjoyable and well supported by parent so please look out for further details from the PTA in school bags.

**Bags2School** - this will take place on 3<sup>rd</sup> March. Please bring bags in to school on this day and leave them outside the office entrance - (**NOT** before as we are unable to store them before collection day)

They accept the following items:

- Paired shoes (tied together or elastic band around)
- Handbags, hats, bags, scarves and ties
- Jewellery, belts
- Lingerie, socks
- Soft toys
- Household linen, curtains
- Towels, bedding (bed sheets, pillow cases and duvet covers)
- Men's, ladies and children's clothing

- **World Book Day takes place on Thursday 2nd March 2017** - We would like to invite your child to come to school on World Book Day, dressed as a character from a book they particularly enjoy. It would be lovely if they could bring a copy of the book with them so they can share it with their class. Every child receives a £1 World Book Day Book Token





**'Once a ~~Week~~, Take a Peek'** - Please take a peek **once a day** instead of our usual once a week campaign. Unfortunately we have had a number of children with head lice and thread worm - information has been sent home in school bags.

Yours sincerely,

S.E. Hall

Mrs S. Hall  
**Headteacher**

Please remember to name your child's school uniform and P.E. Kit - it helps us to return sweatshirts etc. to the correct child.

### SPRING TERM DIARY DATES

<b>February</b> 17 <sup>th</sup> 17 <sup>th</sup> ** 28 <sup>th</sup>	Break Up for half-term Year 4 'Quick Sticks' Hockey Tournament <b>HALF – TERM</b> Year 3 trip to Segadunum
<b>March</b> 1 <sup>st</sup> 2 <sup>nd</sup>  6 <sup>th</sup> and 8 <sup>th</sup>  9 <sup>th</sup> 10 <sup>th</sup> – 19 <sup>th</sup> 15 <sup>th</sup> 16 <sup>th</sup> 21 <sup>st</sup> or 22 <sup>nd</sup> 21 <sup>st</sup> 22 <sup>nd</sup>  23 <sup>rd</sup> 24 <sup>th</sup> 29 <sup>th</sup> 30 <sup>th</sup>  30 <sup>th</sup> 7 <sup>th</sup> April  24 <sup>th</sup> April 24 <sup>th</sup> - 28 <sup>th</sup> April	Year 3 sing at The Lawns Care Home Mrs Rosario's Class World Book Day – children are invited to come dressed as a character from their favourite book Pupil Progress Meetings / Parents Evening 3.45pm – 5.45pm Reception – Year 4 Morning Nursery – 9.30 to 11.15 am and 3.45pm to 5.45pm Afternoon Nursery – 1.00 to 3.15pm and 3.45pm to 5.45pm Reception Class – Church Visit (TP) British Science Week Dance Festival (Year 4) – Whitley Bay Playhouse Reception – Church Visit (HM) Be Safe Workshop – for Year 4 Afternoon – Mother's Day Gift Shop Musical Celebration 6pm - for children in Year 2,3 and 4 who are in the Choir or play the violin Morning – Mother's Day Gift Shop Red Nose Day – Comic Relief Easter Assembly – Reception, Yr 1 & 2 - 9am Easter Assembly – Year 2, 3 & 4 – 9am Please note only <b>one adult per child</b> as we have limited space in the hall. G Force Disco Yr 1 -2 5pm -6pm and Year 3 and 4 6.15pm -7.15pm Break up for Easter holidays  <b>SUMMER TERM</b> Return to school for the Summer term Year 4 High Borrans Residential Visit <b>PLEASE NOTE:</b> <b>4<sup>th</sup> MAY</b> SCHOOL OPEN FOR RECEPTION TO YEAR 4 ON 4th MAY (Election day) SCHOOL CLOSED FOR NURSERY <b>26<sup>th</sup> MAY</b> – TEACHER TRAINING DAY SCHOOL CLOSED FOR ALL PUPILS (including Nursery)

\*\* - New date added